

tweak

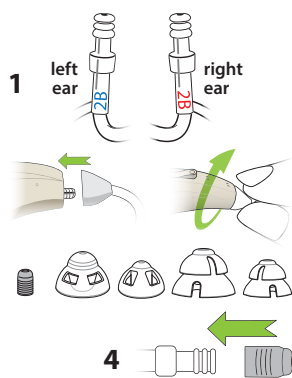
connecting tube and tip

- 1 Choose either a left or right sound tube.
- 2 Attach tube connector end to sound post on amplifier. Twist tube clockwise until snug.

- 3 Choose tip to use with sound tube.

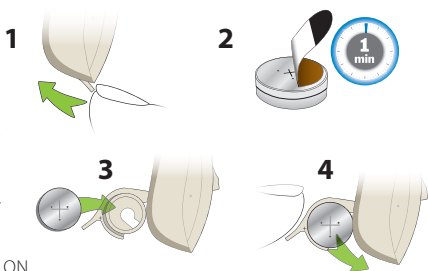
When choosing the proper tip, the goal is to get a fit that is comfortable and secure enough to keep the tip in the ear. Larger tips will create a more snug fit and increase the bass sounds (lower frequencies) and reduce feedback.

- 4 Align tip with end of sound tube and push tip straight on.



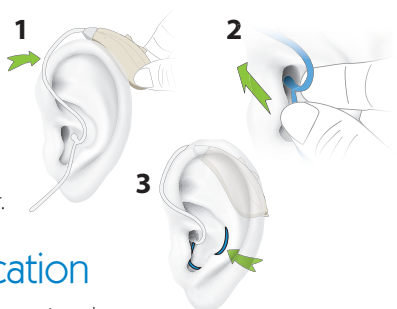
inserting a battery

- 1 Open battery door.
- 2 Remove brown-colored tab on new battery. Wait one minute for battery to activate.
- 3 Insert battery – positive “+” side – facing up.
- 4 Close battery door. Tweak is now ON.



wearing tweak

- 1 Place Tweak over your ear. Curve of sound tube should rest on top of your ear.
- 2 Insert tip into ear canal.
- 3 Position retaining lock in bowl of ear.



selecting your amplification

With a fresh battery in your Tweak and wearing the amplifier, you're ready to choose an amplification setting.

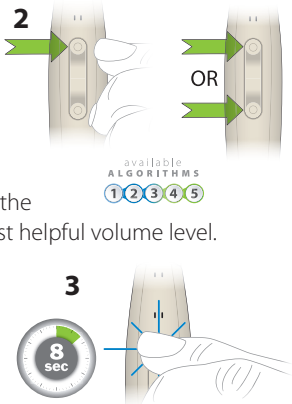
- 1 Start out in a quiet environment. The first time you turn Tweak on, it will be at the lowest amplification setting. How does it sound?

- 2 To try the next level of amplification, press and release the upper portion of the rocker switch. You will hear two beeps, indicating you are now in Amplification Setting 2.

What you are doing is sampling the available acoustic settings for quiet environments. There are five different settings for you to try. Choose the one that sounds best to you – most natural, most helpful volume level. Press and release the upper or lower rocker switch to continue sampling the settings.

- 3 Once you've made your decision, press and HOLD the rocker switch for eight (8) seconds, until you hear a long beep. This procedure locks in your chosen amplification setting. Two programs are now available: Quiet and Noise.

Setup is now complete! Tweak remembers your preferred amplification setting from now on.

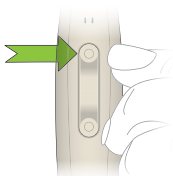


If you find you can't get enough volume, call 1-888-815-3240 for additional options.

Complete instructions are available in the user manual.

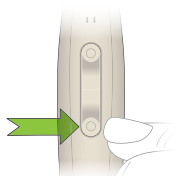
From this point forward, the rocker switch provides two functions: to change the volume, and to switch between Quiet and Noise programs.

to increase volume



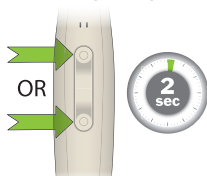
tap upper rocker switch

to decrease volume



tap lower rocker switch

to change programs



press and hold the rocker switch for 2 seconds then release